



OPTIONAL ENHANCEMENTS

**Optional Enhancements depicted in this package will be chosen with interior finish selections. Additional cost will be payable at Closing. Pricing shown is an estimated approximate range to assist in determining Purchaser's interest in the presented enhancements. Costs include the enhancement itself as well as all associated electrical work, installation, material, labor, taxes and fees, etc. Costs are quoted as June 2022. Final costs will be presented at the time of selection.*

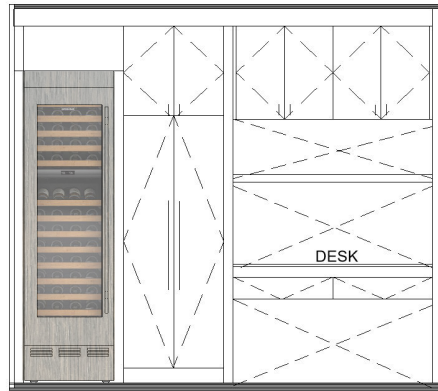
FULL HEIGHT WINE FRIDGE

ESTIMATED COST: \$7,000

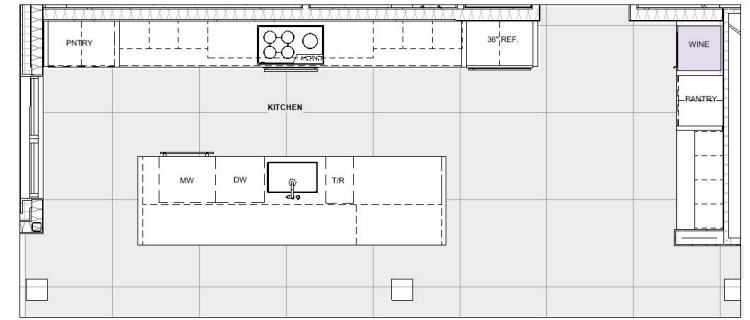


FULL HEIGHT WINE FRIDGE
Sub Zero - Panel Ready
24" W X 84" H

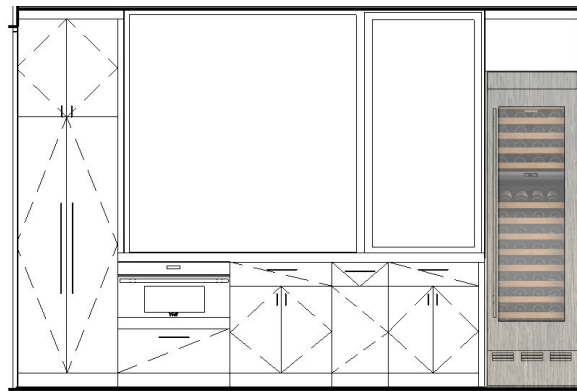
X01 KITCHEN



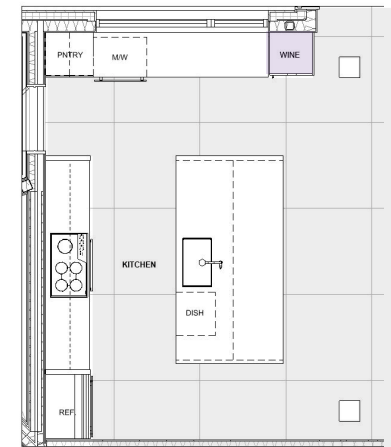
WINE 24 PANTRY 27



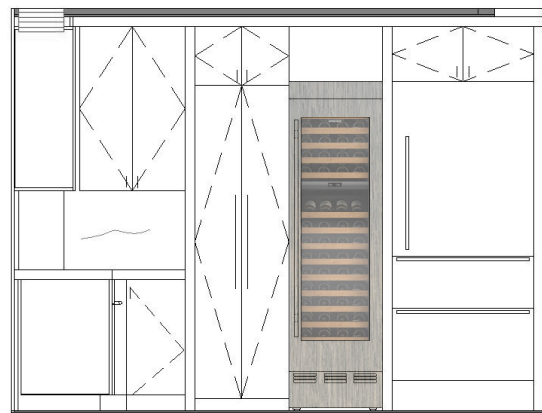
TYPICAL X02_X03_X04



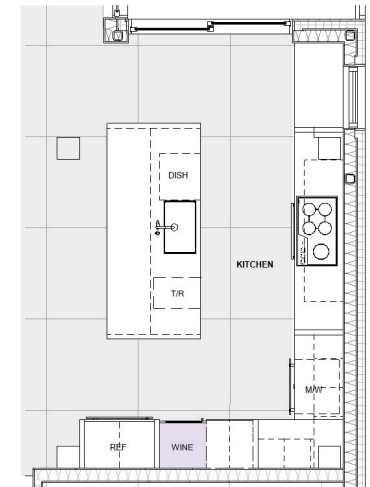
PANTRY 27 WINE 24



X05 KITCHEN



PANTRY 24 WINE 24



*If full height wine fridge is selected, the 24" under counter wine fridge in the base design is replaced with a base cabinet

BUILT-IN BUNK

ESTIMATED COST RANGE: \$22,000 - \$40,000, DEPENDING ON PLAN



Artist's conceptual rendering of residence 402. All bed configurations vary by plan; refer to specific residence plan drawings.

*Excludes mattresses and bedding

ALPINE



WALL SCONCE
Apparatus
Trapeze - Blackened Brass



NIGHTSTAND HARDWARE
Schoolhouse Electric
Parker Pull - True Black



MILLWORK FINISH
Character Grade White Oak
Toffee

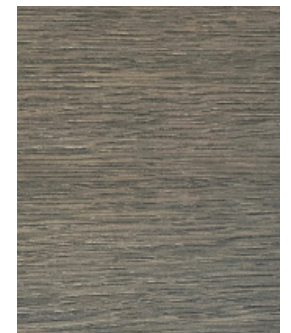
CONTEMPORARY



WALL SCONCE
Apparatus
Trapeze - Tarnished Silver



NIGHTSTAND HARDWARE
Schoolhouse Electric
Parker Pull - Satin Nickel



MILLWORK FINISH
Rift Cut White Oak
Smoke

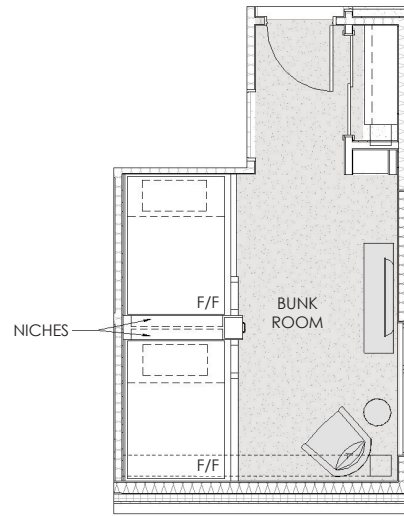
BUILT-IN BUNK

ESTIMATED COST RANGE: \$22,000 - \$40,000, DEPENDING ON PLAN

X01 FLOOR PLAN AND ELEVATION

FULL OVER FULL BUNK CONFIGURATION

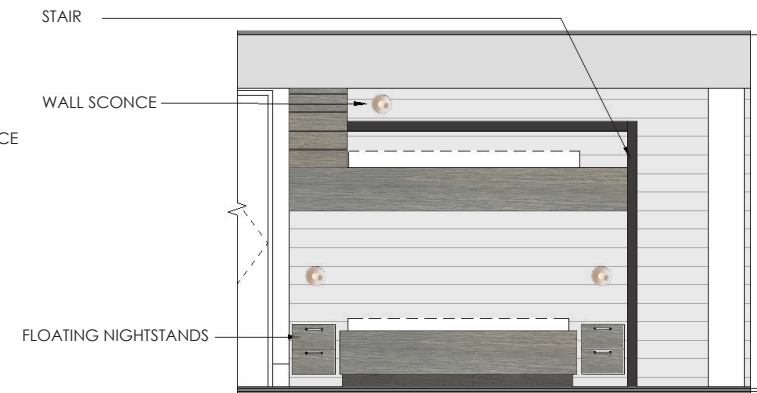
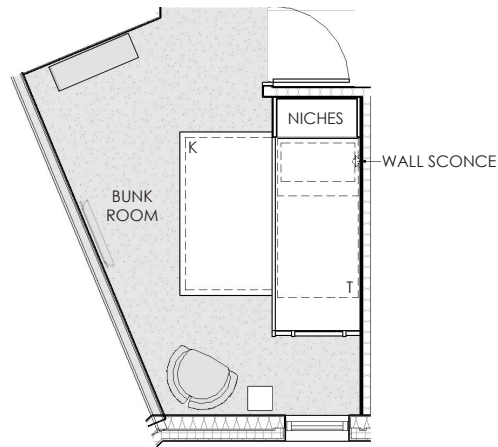
*USB and power connections at the back of niches



TYPICAL X02_X03_X04 FLOOR PLAN AND ELEVATION

TWIN OVER KING BUNK CONFIGURATION

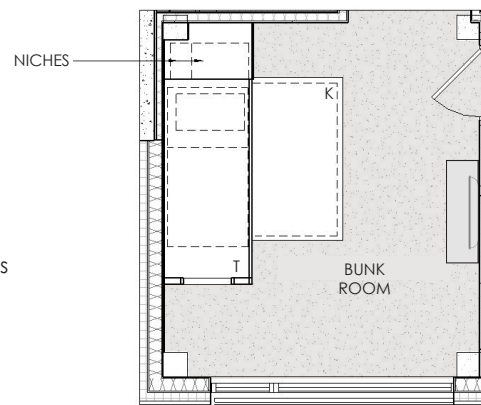
*USB and power connections at the back of niches



X05 FLOOR PLAN AND ELEVATION

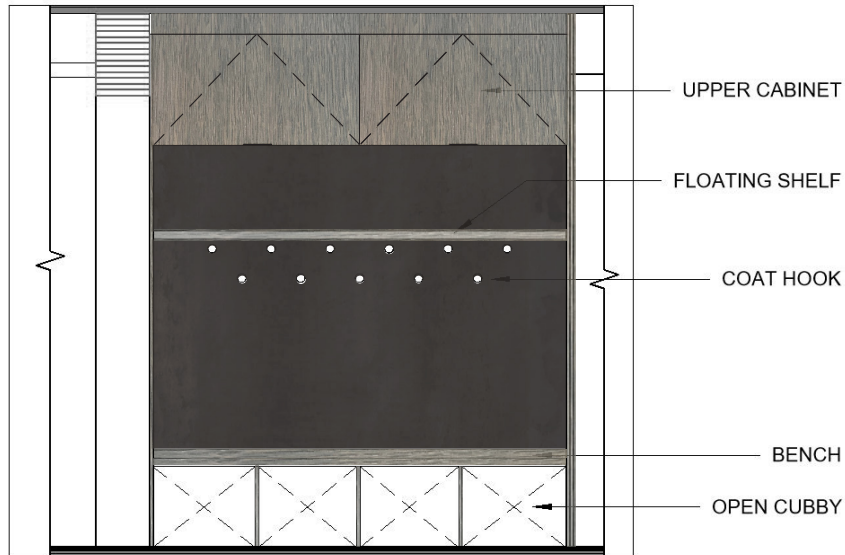
TWIN OVER KING BUNK CONFIGURATION

*USB and power connections at the back of niches

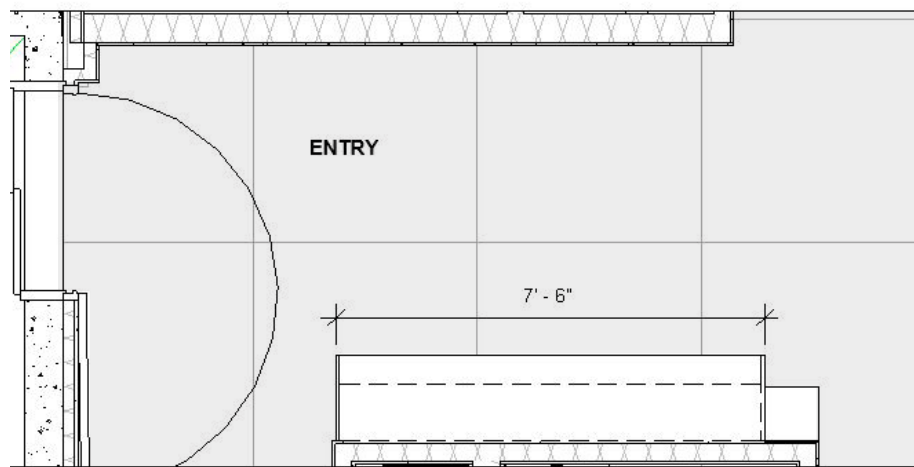


ENTRY BENCH AND MILLWORK

ESTIMATED COST: \$22,000



TYPICAL ELEVATION ACROSS ALL UNIT TYPES.
Elevation shown in Contemporary scheme, but Purchaser to select millwork finish.

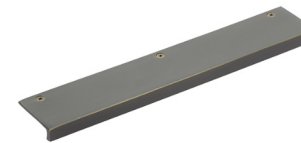


Entry benches would be located at entry by elevator. See plan for additional details.

ALPINE



COAT HOOK
Schoolhouse Electric
Mara Hook - True Black



CABINET PULL
Emtek - Edge Pull
Sandcast Bronze



MILLWORK FINISH
AND BACK WALL
Character Grade White Oak

CONTEMPORARY



COAT HOOK
Schoolhouse Electric
Mara Hook - Chrome



CABINET PULL
Emtek - Edge Pull
Tumbled White



MILLWORK FINISH
Rift Cut White Oak
Smoke



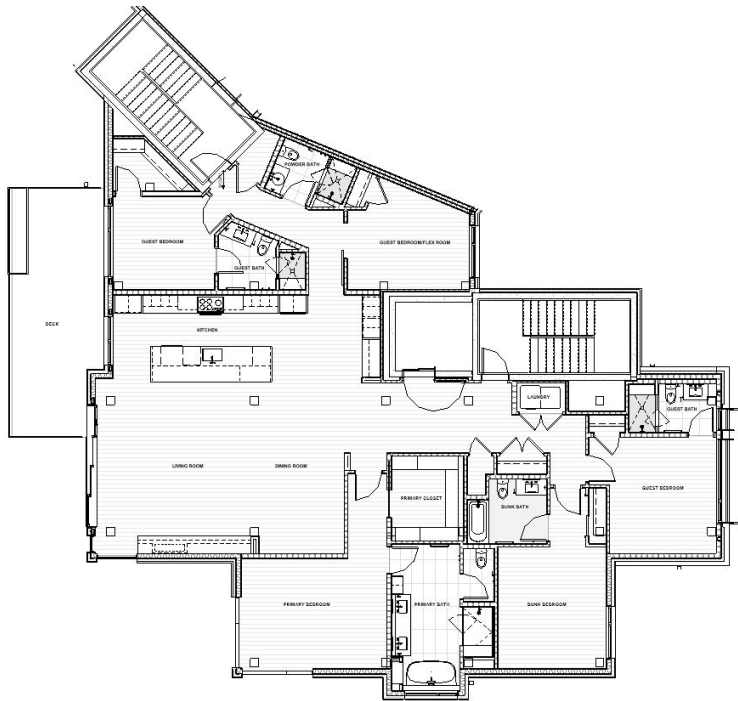
STEEL PANEL - BACK WALL
Warm Bronze Finish

BEDROOM WOOD FLOOR ADDITION

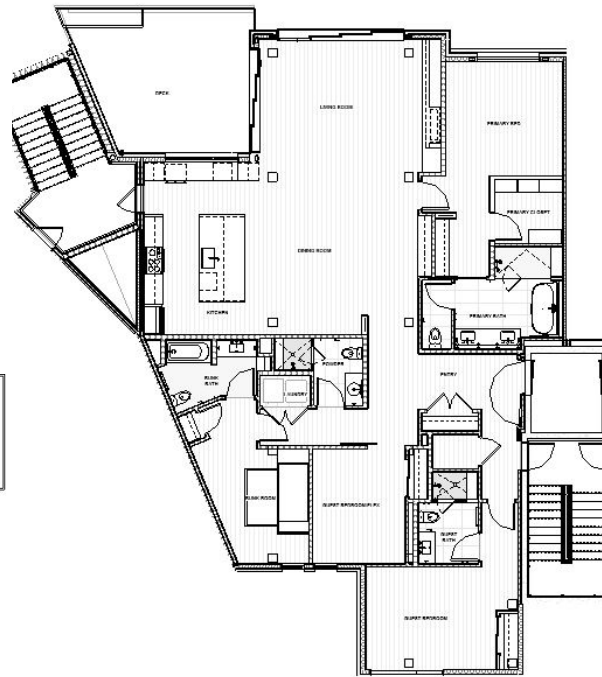
ESTIMATED COST RANGE: \$6,000 - \$8,000, DEPENDING ON PLAN



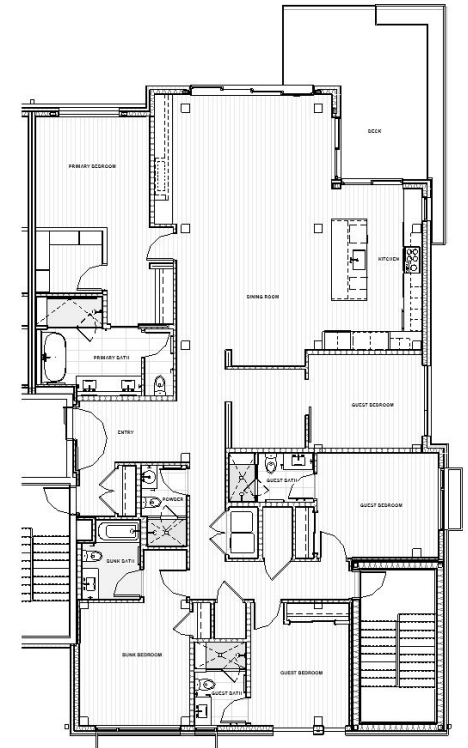
WOOD FLOORING
Wide Plank White Oak
Engineered Flooring
Biarritz



TYPICAL X01 FLOOR PLAN



TYPICAL X02_X03_X04 FLOOR PLAN



TYPICAL X05 FLOOR PLAN

*Alpine - Option to replace carpet in all bedrooms with wood flooring

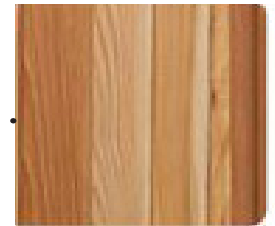
*Contemporary - Option to switch from large format floor tile to wood flooring; additional option to replace carpet in bedrooms with wood flooring

HOT TUB

ESTIMATED COST \$26,000



INSIDE SHELL
Drift



EXTERIOR SIDING COLOR
Natural Cedar and Stainless
Steel Bands



STAIRS
Black



INTERIOR

HOT TUB
Nordic Crown XL
Natural Cedar
Seating Capacity: 6
Jets: 30
Spa Volume: 330 gal

* Refer to floor plans for residence location. Cost includes hot tub, installation, electrical work, permits, fees, insurance, etc. Cost for residences 101, 203, 204, and 205 includes extended snowmelt on secondary concrete pads for an additional \$7,000 - \$9,000 depending on plan.



SLIFER
SMITH &
FRAMPTON



All information including materials, specifications, finishes, dimensions and photos depicted or otherwise described herein are subject to change.

www.aurasnowmass.com
info@aurasnowmass.com
6/13/2022